

97-02 Navigator/ Expedition Rear Air Spring

Air Spring Removal



WARNING: The air suspension system is under pressure (up to 10 bar, or 150 lb/in²). Do not allow dirt or grease to enter the system. Always wear standard protective hand, ear, and eye protection when servicing the air suspension system.

Removal

1. Turn the air suspension switch to the OFF position. (Switch is located on the passenger front kick plate.)
2. Raise the vehicle on a hoist or with the proper lifting equipment. Suspension must be at full rebound with no load.



WARNING: Always support the chassis on safety stands. Refer to your Owner's Manual for correct lifting instructions.

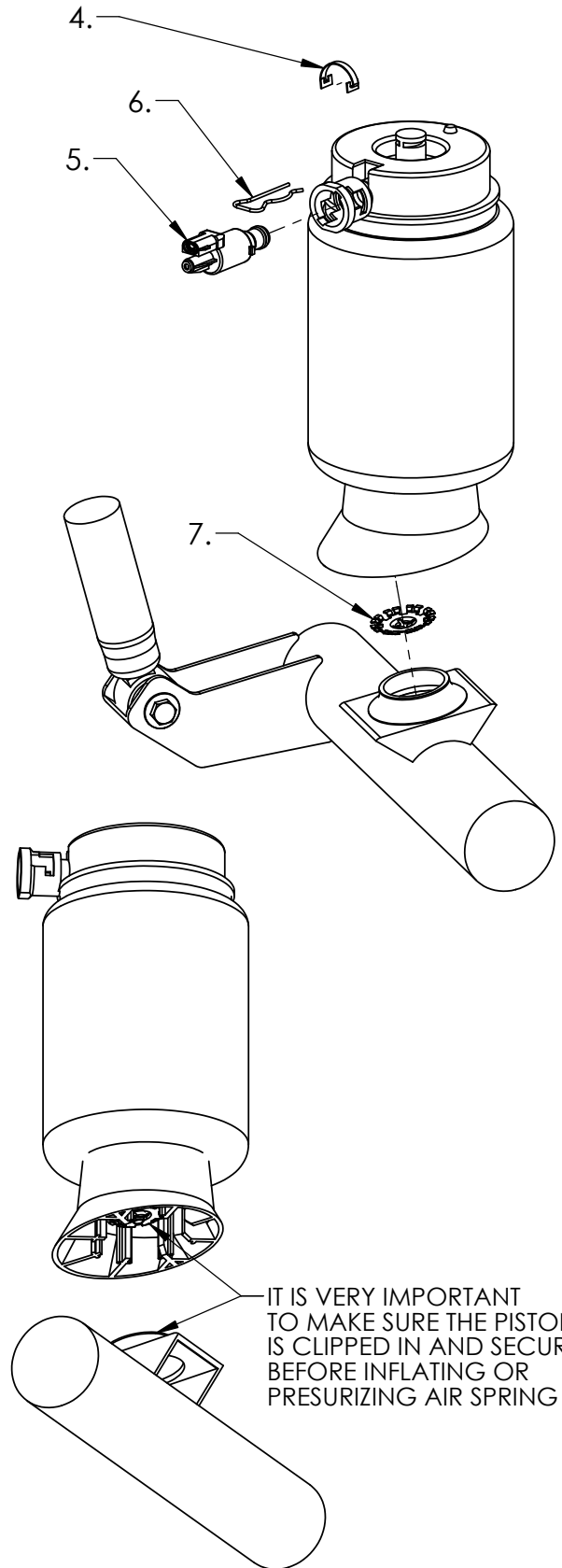
3. Remove rear tire(s).
4. Remove air spring solenoid retaining-clip.
5. Rotate solenoid counterclockwise to the first stop, and then carefully pull out to vent the air pressure from the air spring. After air spring is deflated, turn again and remove solenoid from air spring.
6. With pliers, or a suitable hooked tool, remove the clip that secures the top of the air spring to the chassis. **NOTE: To access the clip, go under the wheel arch, between the body of the vehicle and the chassis.**
7. Remove the piston-to-axle spring seat clip. (Air Spring is held in place with a round retainer clip under the piston cap. To unsnap clip, gently pry between the piston and the axle. Clip will unsnap when pressure is applied.)
8. Carefully remove air spring from the vehicle.
9. Seal off solenoid to prevent any dirt or grease from entering system.

Air Spring Installation

1. Change o-rings on the air spring solenoid.
2. Install solenoid, and replace solenoid retaining-clip.
3. Replace the top air spring retaining-clip.
4. Clip the bottom of the air spring piston to the axle. **It is very important to make sure the piston is clipped in and secure before inflating or pressurizing air spring.**
5. Replace tire and wheel assembly. Tighten wheel hub bolt nuts to 115-142 N-m (85-105 lb-ft).
6. Remove all safety stands and lower vehicle.
7. Turn the air suspension switch back to the ON position, and start vehicle. Vehicle should rise back to factory trim height.



WARNING: Make sure to tighten all wheel hub bolt nuts to 115-142 Nm (85-105 lb-ft).



			DIMENSIONS ARE IN INCHES TOLERANCES: FRACTIONAL ± ANGULAR: MACH ± BEND ± TWO PLACE DECIMAL ± THREE PLACE DECIMAL ±	NAME	DATE	<p align="center">1997-2002 LINCOLN NAVIGATOR REAR AIRSPRING INSTALL</p>	
				DRAWN	RLS		06/15/06
				CHECKED			
				ENG APPR.			
				MFG APPR.			
				Q.A.			
				COMMENTS:			
PROPRIETARY AND CONFIDENTIAL THE INFORMATION CONTAINED IN THIS DRAWING IS THE SOLE PROPERTY OF ARNOTT, INC. ANY REPRODUCTION IN PART OR AS A WHOLE WITHOUT THE WRITTEN PERMISSION OF ARNOTT, INC. IS PROHIBITED.	NEXT ASSY	USED ON	MATERIAL			SIZE A DWG. NO. NAVIGATOR-AIRSPRING-INSTALL REV. 0	
	APPLICATION		FINISH			SCALE: 1:8 WEIGHT: SHEET 1 OF 1	
				DO NOT SCALE DRAWING			